

MONTHLY MEMBERSHIP PROGRESS REPORT

LOCATION INDIA

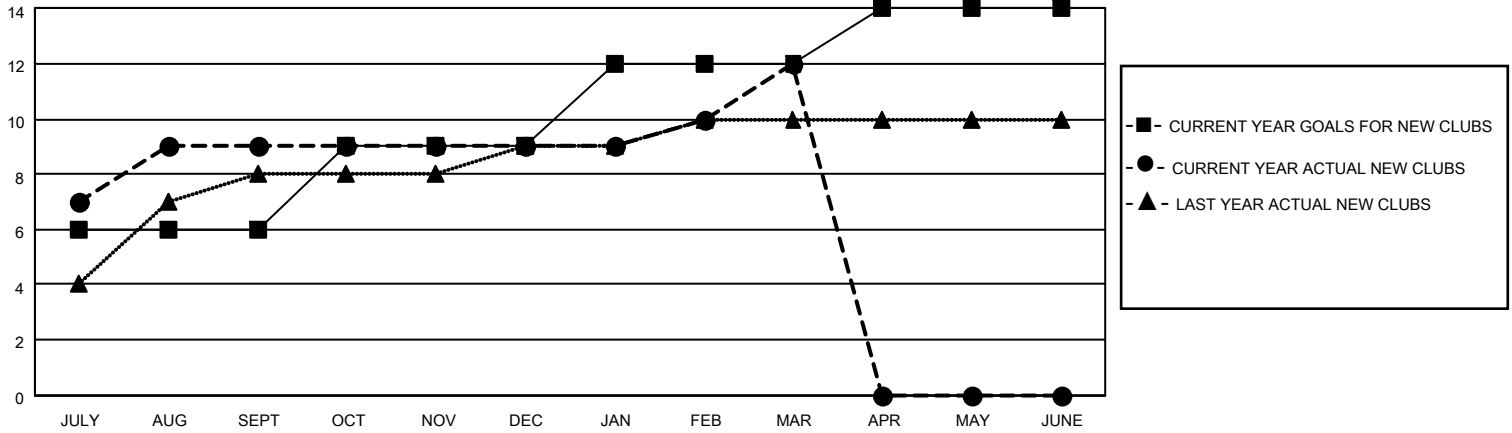
District 3233E1

Results as of: 3/31/2021

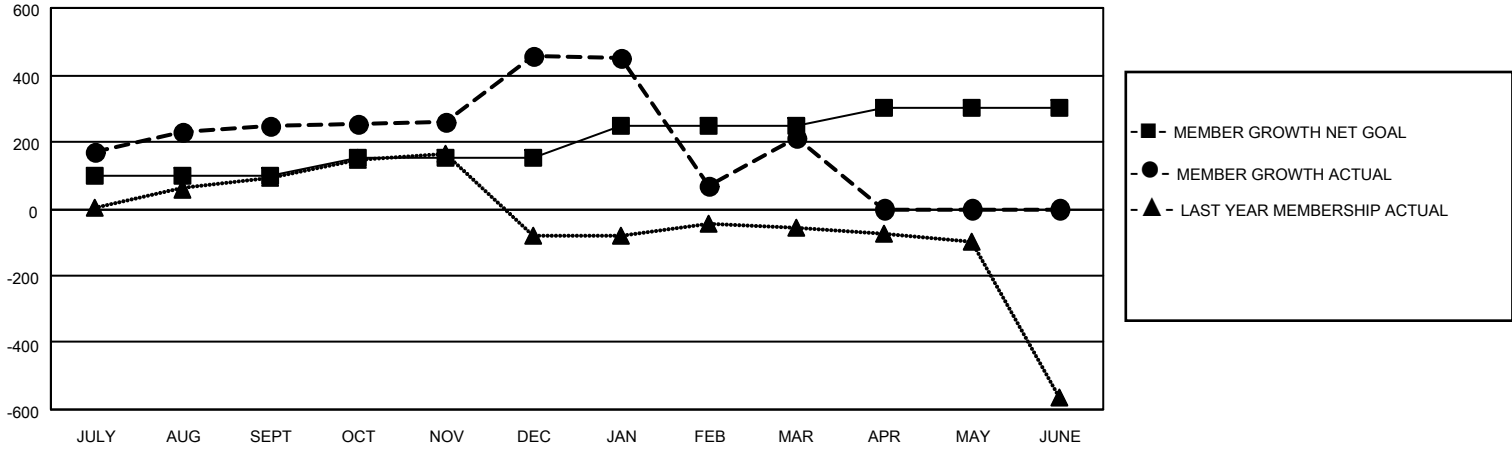
Clubs			
RESULTS FOR 2020-2021			
QUARTER	NEW CLUB GOAL	NEW CLUBS	DROPPED CLUBS
JULY/AUG/SEPT	6	9	0
OCT/NOV/DEC	3	0	0
JAN/FEB/MAR	3	3	25
APR/MAY/JUNE	2	0	0

Members			
RESULTS FOR 2020-2021			
QUARTER	MEMBER GROWTH NET GOAL	MEMBER GROWTH ACTUAL	DROPPED MEMBERS ACTUAL (including transfers)
JULY/AUG/SEPT	100	368	114
OCT/NOV/DEC	50	404	192
JAN/FEB/MAR	100	197	434
APR/MAY/JUNE	50	0	0

GOALS AND ACTUAL NEW CLUBS CUMULATIVE



GOALS AND ACTUAL MEMBERS CUMULATIVE



DROPPED CLUBS: 25

94 CLUBS OF 191 ADDED 1 OR MORE NEW MEMBERS

GENDER DISTRIBUTION

MALE 3,924 (70.74%)
FEMALE 1,623 (29.26%)

DROPPED MEMBERS

[CLICK HERE FOR CUMULATIVE MEMBERSHIP DATA](#)

DECEASED	11
CLUB CANCELLED	394
OTHER	335
TOTAL	740

TOTAL FAMILY UNIT MEMBERS	2,552
FAMILY MEMBERS PAYING HALF DUES	1,404